

### Accompaniment example of the Samba style.

The following example is a transcription of a suggested accompaniment that I recorded for the song "Só Te Esperando." I transcribed the 1st chorus and left the 2nd chorus for you. Try to transcribe it yourself. The 1st and 2nd choruses are pretty much the same and will be good practice for you.

**Track 28**

**B<sup>7</sup><sub>4</sub> (9)**



5

**B13**

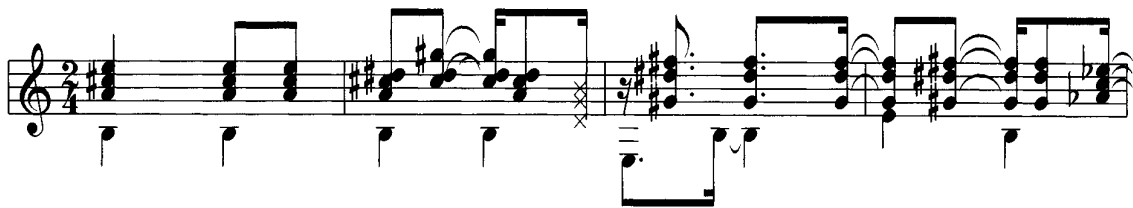


4

**Emaj9**



6



**Bb<sup>7</sup><sub>4</sub> (9)**



4

**Bb7 (9)**



3

**Ebmaj9**



5



**C<sup>7</sup><sub>4</sub> (9)**



6

**C13**

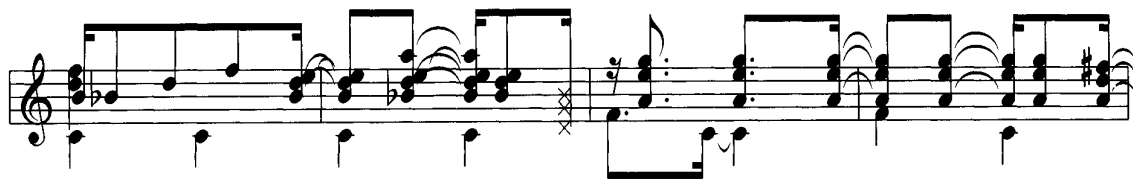


5

**Fmaj9**



7



Accompaniment Example

Bm7



7

E7(b9)



6

Am<sup>maj</sup>9



5

Am9



5

Am<sup>6</sup>9



4



Gm11



1

C7(b9)



2

Fmaj7(#5)

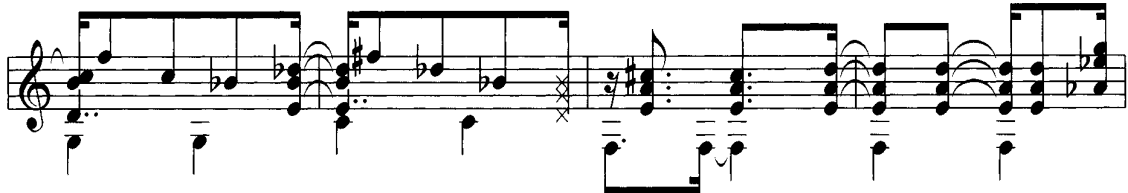


1

F6



1



Fm9



6

Bb13



6

Ebmaj9



5



B<sup>7</sup><sub>4</sub>(9)



5

B13



4

Em9



2

Em<sup>maj</sup>9



2



continued on next page

Samba

A7(#11)



4

G#m9



3

F#m7 B7(b9)



2



1

Emaj9



1

Fm9



6

Bb13



6

Ebmaj9



5

B7<sup>4</sup>(9)



5

B13



4

Bb7<sup>4</sup>(9)



4

Bb13



3

Ebmaj9



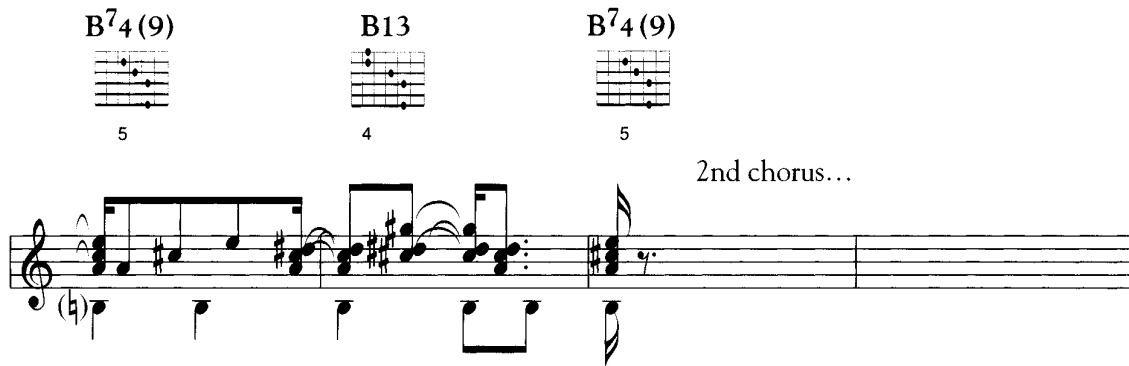
5

Accompaniment Example

B<sup>7</sup>4 (9)      B13      B<sup>7</sup>4 (9)

5                      4                      5

2nd chorus...



Toninho Horta

Artist courtesy