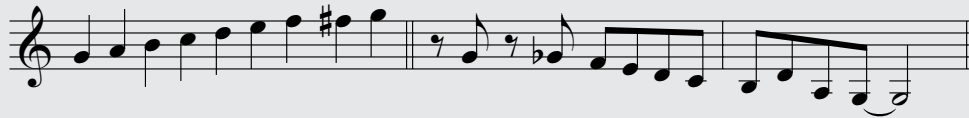


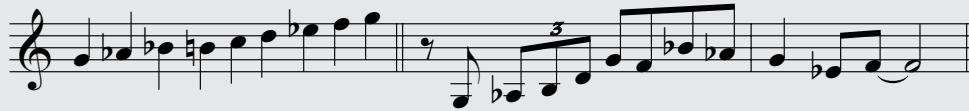
Chapter 20

Here's an exercise to help develop your ability to discriminate between the various chord/scale combinations. While playing a simple G7 (root, 3rd, and 7th) sing each scale and sample improvisation. Then play both on your instrument. Finally, improvise freely with the scale over the G7. For right now, concentrate on the sound of these scales, not the theory. Later you can learn more about their structures—they're in the appendix on page 310.

G dominant bebop



C minor bebop (from G to G)



A \flat melodic minor (G altered)



D melodic minor (G Mixolydian #4)



C melodic minor (G Mixolydian \flat 6)



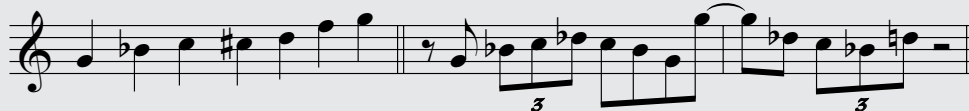
G auxiliary diminished



G whole tone



G blues



D \flat pentatonic

