

Chapter 13 - The C and G Blues Scales

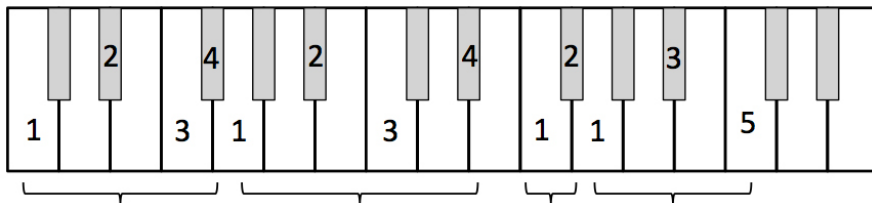
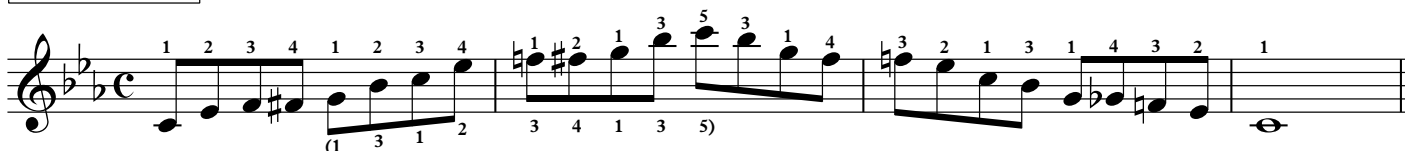
(Everyone's Favorite!)

The blues scale is virtually identical to the minor pentatonic scale. It's a difference of just one note: you just add the flatted fifth (or sharp fourth) to the pentatonic scale and *presto*, you've entered a whole new emotional spectrum! A lot of the practice routines and hand jumping covered earlier will apply here and should really pay off big time for you. You may find that some of the mobility you will acquire here will enable you to be able compete with fast and powerful instruments like the guitar and saxophone.

The C Blues Scale

We'll start with the C blues scale because it's familiar to many and has a nice mix of black and white keys. There is an alternate fingering under the notes that is easier to play but does confine you to a one-octave box. Ex. 64A

C Blues Scale



The left hand fingering going up is: **531 4321 31 4321** Coming down: **1234 13 1234 135**

If you find that this scale is a bit of a finger buster, example 64B is a little prep exercise to help ease your pains. I selected just the downbeats from Ex. 64A and they're all C, F or G and played with the just 1st and 3rd fingers. As you play these, they convey no sense of being a blues scale but once you locate them, you can traverse your entire arm across the keyboard as easily as it were suspended by strings.

EX. 64B

