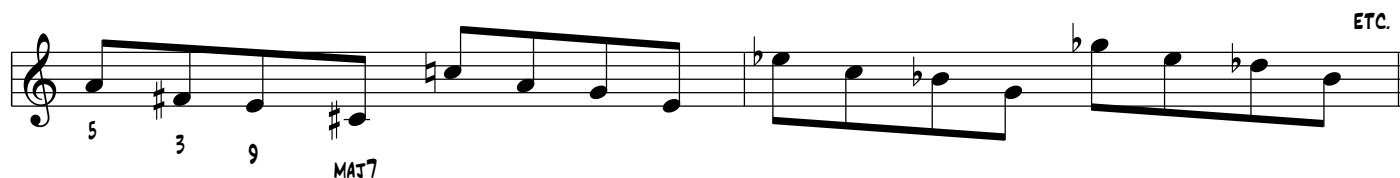


281: DESCENDING 2ND INVERSION MINOR 7TH ARPEGGIOS, DESCENDING CHROMATICALLY



282: DESCENDING MAJOR 9TH ARPEGGIOS, VOICED 5 3 9 MAT7, ASCENDING IN MINOR 3RDS



283: SAME AS #282, DESCENDING IN MINOR 3RDS



284: 1ST INVERSION MAJOR TRIADS ASCENDING IN MAJOR 3RDS (SYMMETRIC AUGMENTED)



285: 1ST INVERSION MAJOR TRIADS WITH LOWER CHROMATIC NEIGHBOR, DESCENDING IN MAJOR 3RDS

